

Smap3D EDM/PDM

For Effective Data Management

Economic success requires tight integration of business processes, documents and information throughout the complete product lifecycle. Documents from design and development are not only needed in production and service, but also in sales and purchasing.

Smap3D EDM/PDM is the obvious choice in manufacturing industry to achieve this high level of integration, and the optimal solution for data management with Solid Edge!

Smap3D manages all the documents and information required by a company in the product lifecycle. Smap3D takes into account the special needs of the design department, and greatly simplifies their data management processes.

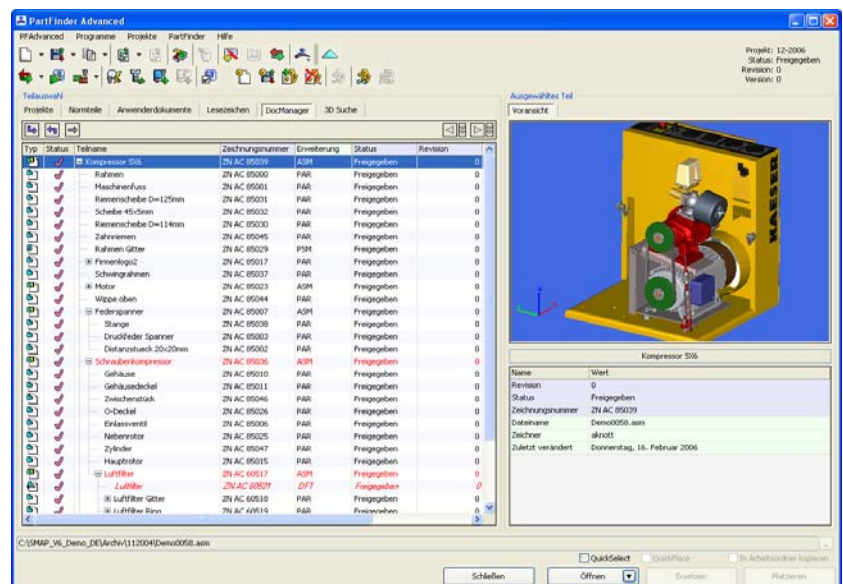
High level integration with Solid Edge

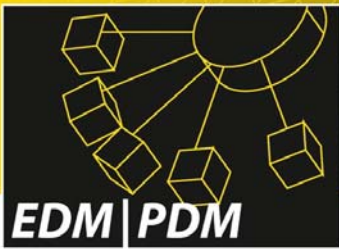
Smap3D has been developed specially for Solid Edge. The depth of integration with Solid Edge is unique in the UGS Voyager program, earning Smap3D therein the Premium status. The customer can therefore be assured of a high quality solution for managing Solid Edge and other design documents. And we ensure that Smap3D releases very closely follow the release of new Solid Edge versions.

Thanks to the deep integration with Solid Edge the end user hardly notices the small amount of extra work required for document management. In fact, in many situations the user will be guided through the process in such a way as to make his work easier and less prone to mistakes. It is possible, for example, to create a new revision of a released assembly, including all dependent 2D drawings, with just a few mouse clicks.

The Main Benefits of Smap3D EDM/PDM

- High level of integration with Solid Edge
- Manages all the documents in your company
- Management of standard parts and recurring parts
- Efficient classification system
- Priority management
- Status management
- Workflow
- Intelligent search functionality
- Project management
- Support for different databases
- ERP integration





Main Functions of Smap3D EDM/PDM

Management of all documents in your company's workflow

Smap3D can be used for the management of all document types: Word, Excel, PDF, DXF files etc. Smap3D is hence not just a tool for the design department. Production planning can add design plans to a project. Sales can add the customers design specifications to a project, which can then be accessed by the designers. Purchasing has access to drawings which they can then send to suppliers.

Status management

Smap3D guides the user through status changes and notifies the user before potential errors occur. A good example of this is the checks performed on draft files before they are released. Smap3D only allows the release of up-to-date drawings. Drawings that are not up-to-date will not be released and can then be updated by the user. This saves the user the task of manually checking all drawings.

Workflow

With Smap3D it is possible to execute any number of company-specific processes at certain stages of the Smap3D workflow. For example, it is possible to create a tiff file for a drawing as it is released, and then to add the tiff file to the appropriate project in the Smap3D database.

Intelligent 3D search

The 3D Search (a part of Smap3D SmartSearch) allows the user to search for documents based on physical properties, making it possible to find parts based on their geometry. That well-known question "Haven't we already done something like that before?" can be quickly answered with the Smap3D Search. Search results are returned sorted by geometric similarity. The benefits are obvious – less time spent repeating designs and fewer documents to manage.

Project management

Smap3D Project is an ideal extension to PartFinder Advanced. Project allows you to manage projects directly in PartFinder Advanced. CAD documents, Excel tables, Word documents, Picture files etc. can all be linked to a project. In addition, it is also possible to add project specific properties to these documents. Your active project gives you an overview of all the important related information, and is always at the tips of your fingers with PartFinder Advanced.

Management of standard parts and recurring parts

Standard parts are central part of Smap3D. The standard parts in Smap3D are integrated with its' EDM/PDM functionality. Standard parts are recognized by the EDM functions and are treated appropriately. It is, of course, also possible to make use of this integration with the Machinery Library from Solid Edge – Machinery Library is also developed by CAD Partner GmbH.

Efficient classification system

Smap3D offers a highly efficient and simple to use classification system. Every document can have multiple classifications, all of which can be used when searching. This makes it possible to find an assembly under 'Products' - typical for the sales department - and also enables purchasing staff to find the same assembly under 'Projects'. Using these capabilities can greatly reduce the time spent searching for documents, as everybody searches in a way applicable to their needs.

Priority management

With Smap3D it is possible to define a hierarchy of preferred parts up to ten levels deep. The purchasing department can then determine which parts are most preferable for use depending on price, stocks etc. This can save your company considerable production costs.

ERP interface

With Smap3D it is possible to connect external programs to the workflow. These can either be started interactively or automatically from Smap3D. This makes all kinds of automation possible, for example the automatic generation of tiff files for released drawings. External programs can communicate with Smap3D through a pre-defined data format. This is a two-way communication – information can be passed from Smap3D to the external program, that can in turn pass information back to Smap3D. Using these techniques it is possible to customize Smap3D according to your company's needs, as has been done several times by implementing interfaces to ERP systems.

Support for different databases

Smap3D supports the following databases: Access, Microsoft SQL and MySQL. Access is acceptable for the management of Standard Parts. When making use of the PDM functionality of Smap3D we recommend Microsoft SQL or MySQL. Only with one of these databases can we guarantee acceptable performance and stability.

Smap3D is a product from CAD Partner GmbH.
Further information about the software and its capabilities can be found at:

www.Smap3D-EDM-PDM.com



CAD Partner GmbH

Am Marktplatz 7
93152 Nittendorf / Regensburg
Germany
Fon +49 (0) 9404-9639-21
Fax +49 (0) 9404-5209
eMail info@Smap3D.com